

THIS WEEK at Word of Life

All events at church building unless noted otherwise.

Sunday, December 11

Traditional Worship
8:30 am

Bible Study
9:45 am
40 Messianic Prophecies

Contemporary Worship with Sunday School
9:45 am
Livestream available @ www.wordoflife4u.com/watch

Contemporary Worship with Sunday School
11:00 am

Confirmation
4:00 pm

Youth Group Christmas Party
4:45 pm

Wednesday, December 14

Sunday School Christmas Program Dress Rehearsal
5:30 pm

Leadership Team Meeting
6:30 pm

Thursday, December 15

Couples Bible Study
6:00 pm

Music TEAM
6:30 pm

Saturday, December 17

Rise N Shine
8:30 am

Sunday, December 18

Traditional Worship
8:30 am

Bible Study
9:45 am
40 Messianic Prophecies

Contemporary Worship with Sunday School
9:45 & 11 am

Sunday School Christmas Program
3:00 pm

Confirmation
4:00 am

Youth Group
4:45 pm
Weissmanns
108 Rustic Trail, Cibolo



TODAY'S LifeLesson

Problem to Provision

You think you've got problems?
Think you're underappreciated? See
how God makes Joseph a hero in a
drama in which he has no lines.

Congregational Assembly

Please pray God will continue to
work powerfully through Word
of Life Fellowship and make
plans to attend the annual con-
gregational assembly at noon,
NEXT Sunday, Dec. 18 (after the
11:00 am service). The agenda
items are: approval of the 2023 Ministry Financial Plan
and approval of the 2023 Leadership Team slate which
includes: David Christiansen, Tara Hatfield, Ed Herrera,
Tom Malone, Dustin Nichols, Jan Pawelek, Greg Peterson,
and Jim Weissmann.

Congregational Meeting



Leadership TEAM

Your Leadership TEAM meets **this Wednesday, Dec. 14, 6:30 pm**. Please
pray for God to guide as they plan.
Questions or requests? Please contact
President David Christiansen,
dchristiansen1@gmail.com.

Shopping for Good

As you do your online Christmas shop-
ping, please remember to check out
smile.amazon.com. If you designate
Word of Life Fellowship as the organi-
zation you support, the church receive a donation of 0.5%
of whatever you spend.



Church Cleanup



Rise N Shine

Join this group of faithful volunteers as
they clean the church **this Saturday, December 17**. Meet at the church at
8:30 am. All necessary supplies are pro-
vided. The cleaning service takes care of
bigger jobs, so this group is usually done
in about an hour. Questions? Please
contact Mary Flowers at
mlflowers@sbcglobal.net.

Word of Life Fellowship

December 11, 2022

8:30 Traditional

9:45 Contemporary

11:00 Contemporary

213 Coy Lane

Cibolo, Texas 78108

210-566-2237

www.WordofLife4u.com

BetterLife@WordofLife4u.com

*Building a
bigger heaven &
better lives!*



Welcome!

We respect and welcome people of
every race, culture, status and
religious background. We're first
and foremost Christian and Christ-
centered. Secondly, we are part of
the Lutheran Church Missouri
Synod, an international church body

which stands on the authoritative Word of God,
upholds God's law and proclaims the Gospel which
offers God's free gifts of forgiveness, a better life now
and heaven forever. All this and more are received by
grace alone through faith alone in Jesus Christ alone.

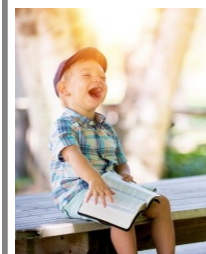
For Children

We are so happy you
have brought your
children to worship
today. After the
Children's Message in
both contemporary
services, children,
Infants—6th grade,
are invited to attend
age appropriate
Sunday school classes:



Movers & Shakers—Infant thru 3 yr old,
JAM (Jesus & Me) - 4 yr old thru 3rd grade,
'Tweens—4th thru 6th grade.

Children may be picked up from their classroom at the
end of the worship service.



A Nursery room is available in the
yellow classroom through the
door under the left screen.

Children's Activity Bags are
available in the lobby. They
include activity books, coloring
sheets, crayons and more. Please
return these bags to the "tree"
after the service.

Building a Bigger Heaven in Texas

This week we're praying for missionary vicar Walker Nery and the people of Bethel Lutheran Church as they reach out to people in Dallas and beyond. We support this ministry by giving a portion of our offerings to Texas Partners in Mission. For more information, visit txlcms.org/tpim.



Christmas Eve

Christmas Eve Invitations

Christmas is a time when many are receptive to an invitation to worship. We will have a candlelight Christmas Eve service on **Saturday, December 24 at 7:00 pm.** Invitations are available in the lobby. Please pick up several

to share with family, friends, fellow students, co-workers and neighbors.

Sunday, December 25

With Christmas Day falling on Sunday, we'll have ONE combined service Christmas Day at **9:45 am.** featuring MANY Christmas songs and carols.



RACAP Needs

The Randolph Area Christian Assistance Program (RACAP) provides emergency assistance to people in need. They currently need:

- Cereal
- 1 or 2 Pound Bags of Dry Beans
- Canned fruit
- 1-2 Pound Bags of Rice
- Canned Soup
- Spaghetti Sauce
- Tomato Products



Please leave donated items in the blue RACAP bin in the lobby. Monetary donations are also needed. Write a check to Word of Life Fellowship and put RACAP in the memo line or place cash in a RACAP envelope and place in the offering box near the glass doors.

Sunday School Children's Christmas Program Dress Rehearsal

All participants in the Sunday School Christmas program will rehearse the entire program in costume **this Wednesday, Dec. 14, 5:30 pm.** Everyone will practice their parts and get comfortable with the flow of the program. Questions? Call Shirley, 210-452-0372.



Children's Christmas Program

You are ALL invited to join the children and adults who have worked diligently on this program **next Sunday, Dec. 18, 3:00 p.m.** Come learn more about the BEST Christmas Present EVER! Bring a friend!



Youth Christmas Party

Calling all youth! Get ready to PARY **Today from 4:45-7:00 pm.** Please dress in your Christmas pjs and your ugliest sweater. Bring a gift (may be from home) valued at \$5 for exchange. Invite your friends to join us! Questions? Please talk to Mark, Toby, Jim or Tammy.

Family Cross

New Word of Life families are invited to donate a cross for the wall. The cross should be no larger than 18 inches. Be sure to write your family's name and the year you started attending Word of Life on the back of the cross. The crosses will be added to the wall on Jan. 7, when we have the BIG ladder out to assist with taking down the Christmas decorations. Questions? Patti@Wordoflife4u.com.



Pill Bottle Recycling

Matthew 25: Ministries accepts donations of empty plastic pill bottles. They accept prescription and over-the-counter pill bottles, large and small with plastic lids. You do not have to remove the label prior to

donating. Just drop your empty bottles with lids in the container in the lobby. Questions? Margie Dominguez, 210-637-9440. Our thanks to a generous family for covering the cost of shipping the empty pill bottles to Ohio. Thanks!

Advent Devotions

A free devotional resource is available now. *A Son Is Given*, looks at the promise of God to send His Messiah as fulfilled in Jesus. The Heavenly Father made good on His ancient pledge. In Jesus we have the love of God come to earth in the form of a child, who is for us, the Savior of the world. Read, download or listen to *A Son Is Given* every day during Advent through your favorite media. For details, visit lhm.org/advent.



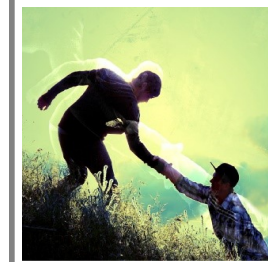
Care Contacts

Prayer Chain:

Jayme Edwards,
210-382-5711

Meals for Ill or Grieving:

Hillary Rubel, 210-787-8972
Hospitalization, Surgery, Major Illness, Pastoral Care:
Pastor Ken 210-862-7629



Ways to give to the Lord at Word of Life:

- **Electronic Check**—Write the fund or funds you want to give to on the memo field in your bank or credit union's bill pay feature.
- **Check**—Write the fund or funds you want to give to on the memo line of your check. Place in the offering box near the door or mail to: Word of Life Fellowship, 213 Coy Ln, Cibolo, TX 78108.
- **Cash**—Write the fund or funds you want to give to on an envelope. Place in the offering box near the glass doors.



- **Online**—Use this QR code or go to WordofLife4u.com/give. The online service will retain a transaction fee of \$.49 plus 1.9% of the total amount of your donation. These are the lowest transaction fees we could find.