

THIS WEEK at Word of Life

All events at Word of Life unless noted otherwise.

Sunday, December 28

ONE Service

9:00 am

Livestream available at wordoflife4u.com/watch

Potluck Brunch

10:15 am

Saturday, January 3

Men's Breakfast Bible Study

8:00 am

El Jalisco, 790 Roy Richard Dr, Schertz
Questions? Mark Stemmermann, 210-508-2073.

Christmas Take-down

9:15 am

Sunday, January 4

Service

9:00 am

Livestream available at wordoflife4u.com/watch

Sunday School/Bible Class

10:15 am

Service

11:15 am

YouTube Livestream

Traveling? Ill? Unable to attend worship? Watch our Sunday service livestream at **9:00 am** or watch the recording later at:

Youtube.com/@WordofLife4u



Facebook Livestream

Like and follow Word of Life on Facebook.
You may also watch, comment and share full services at: Facebook.com/WordofLife4u



Calendar



Give Online



Find a Group



**Men's Breakfast
& Bible Study**

Men are invited to meet **THIS Saturday morning, Jan. 3, 8:00 am** at El Jalisco, 790 Roy Richard Dr, Schertz. Be nourished and encouraged.

Bring a Bible and a friend. Questions? Mark Stemmermann, 210-508-2073.

Christmas Take-Down

Join us **THIS Saturday, Jan. 3, 10:00 am** as we take down the Christmas decorations and box items up for next year. There will be jobs for all ages, and all help is appreciated.



Slide Volunteers Needed

Learn how to run the ProPresenter slides for Sunday morning worship! The #1 skill needed is the ability to pay attention to the service. Training provided. With enough volunteers, operators serve just one Sunday/month. Questions? Patti Mitschke, 210-862-2075 or patti@wordoflife4u.com.



Epiphany House Blessing

Epiphany is **Tuesday, January 6**. The ancient tradition of a house blessing at Epiphany is a great way to start the New Year. This season is particularly timely due to the connection of the visitation of the Magi to the home of the infant Christ. Epiphany House Blessing kits will be available next **Sunday, Jan. 4**.

Word of Life Fellowship

December 28, 2025

213 Coy Lane

Cibola, Texas 78108

210-566-2237

9:00 am Service

10:15 Sunday School for all ages

11:15 am Service

www.WordofLife4u.com

BetterLife@WordofLife4u.com

*Building a
bigger heaven
& better lives!*

Welcome!

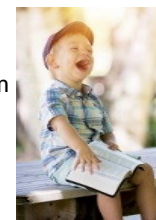
We respect and welcome people of every race, culture, status and religious background. We're first and foremost Christian and Christ-centered. Secondly, we are part of the Lutheran Church Missouri Synod, an international church body which stands on the authoritative Word of God, upholds God's law and proclaims the Gospel which offers God's free gifts of forgiveness, a better life now and heaven forever. All this and more are received by grace alone through faith alone in Jesus Christ alone.



Lesson & Craft

After the children's message, children are invited to the Sunday School room for an age appropriate lesson.

Clipboard Lesson materials which reinforce our Sunday School curriculum are available for children during the service. Clipboards in front are for kids 7+. Clipboards toward the back are designed for younger kids.



Children's Activity Bags are available in the lobby. Inside are activity books, coloring sheets, crayons and more. Please return the bags to the "tree" after church.

Children's Ministry Memory Verse

"For unto you is born this day in the city of David a Savior who is CHRIST the Lord."

Luke 2:11



Building a Bigger Heaven in Texas

This week we're praying for Pastor Andrew Nguyen and the people in our Vietnamese Lutheran churches as they make disciples who make disciples in Houston, Pasadena, and beyond. We support their work through

gifts given to Texas Partners in Mission (TPIM). Find out more at txlcms.org/tpim

Potluck TODAY

Join us for a potluck brunch after worship **TODAY!** Get to know other Word of Life members and guests as we share a meal together! You'll be glad you did!



Neighbor in Need

A Word of Life member was in a recent accident which totaled her car. She received little insurance money, has limited savings,

and is looking for a full-time job. If you'd like to help people connected to Word of Life who have verified needs, please contribute to our Neighbors in Need fund. Simply write Neighbors in Need in the memo line of your check or place cash in a Neighbors in Need envelope at the offering box.

Care Contacts

Prayer Chain:

Jayme Edwards, 210-382-5711

Meals for Ill or Grieving:

Julia Herrera, 210-452-3447

Hospitalization, Surgery, Major Illness, Pastoral Care:

Pastor Ken, 210-862-7629

Pastor Phil, 210-846-8505



Snacks & Coffee

Join us for coffee, tea, and assorted snacks during our Sunday School/Bible Class time. Have a snack you want to share? Please bring it!



True Way of Life Church

True Way of Life Church (soon to be called "New Creation Church") is a congregation of African immigrants, mostly refugees from the violence in Central Africa. It was founded in 2020 by refugee Pastor Chris Rugazura with the support of his wife, Beatrice.

Pastor Chris and Beatrice are now US citizens. Their African style, Swahili-language worship takes place on Sunday afternoons at Beitel Lutheran Church, an old and declining ELCA church on Austin Highway in San Antonio. Pastor Chris counts roughly 135 members of all ages. Pastor Chris is in the Concordia Seminary EIIT program, studying to become LCMS certified. Pray for him and this refugee congregation which has much faith but many challenges.

Looking for Help?

Stephen Ministers are trained in topics including listening, feelings, assertiveness, and confidentiality. They minister to people in transitional situations such as divorce, terminal illness, grief and childbirth. They are also trained to recognize when a care receiver's needs go beyond the care a Stephen Minister can provide and know where the care receiver may seek additional care.

Confidentiality is a cornerstone of Stephen Ministry. Stephen Ministers don't reveal what their care receivers have told them: not to the pastors, not to Stephen Leaders, not to spouses or friends, not to other Stephen Ministers. To request a Stephen Minister, or find out about becoming one, call Tammy Weissmann, 210-314-3754 or Becky Peterson, 210-240-7776.



Connecting with Alex

In our prayers we've been praying for Alex Carr-Palmer as he goes through Army basic training. If you would like to send Alex a card or greeting, please connect with Patti Mitschke, 210-862-2075, for Alex's contact information.

We know he would appreciate your words of encouragement and prayers.



Texas District Church Extension Fund

Our building loan is with the Texas District Church Extension Fund (CEF). Every dollar you save with Texas District CEF earns you a competitive rate of return and provides low-cost

construction loans to Texas congregations. In addition, based upon your investments, Word of Life earns a yearly interest rebate. Please consider the many investment options available through Texas District CEF. Pick up an informational flyer in the lobby or visit www.TexasCEF.org

Giving to the Lord at Word of Life:

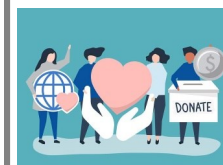
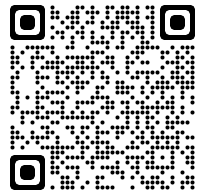
Electronic Check—Write the fund/funds you want to give to in the memo or account number field in your bank or credit union's bill pay feature.

Check—Write the fund/funds you want to give to on the memo line of your check. Place in the offering box near the door or mail to: Word of Life Fellowship, 213 Coy Ln, Cibolo, TX 78108.

Cash—Write the fund/funds you want to give to on an offering envelope and place it in the box near the door.

Online—Scan the QR code or go to: WordofLife4u.com/give.

The online service provider will retain a transaction fee of \$.49 plus 1.99% of the total amount of your donation. These are the lowest fees we could find.



Qualified Charitable Distribution

A Qualified Charitable Distribution (QCD) allows individuals aged 70½ and older to make tax-free donations directly

from their IRA (non-Roth) to a qualified church or charity, helping to reduce taxable income and satisfy required minimum distributions (RMDs). Contact your IRA administrator to start the process. Consult your tax professional for advice. Ask Pastor Ken how this has helped Word of Life donors.